

315-330_w



MANAGEMENT SYSTEM

- ISO 9001:** Quality management system
- ISO 14001:** Standard for environmental management system
- OHSAS 18001:** International standard for occupational health and safety assessment system

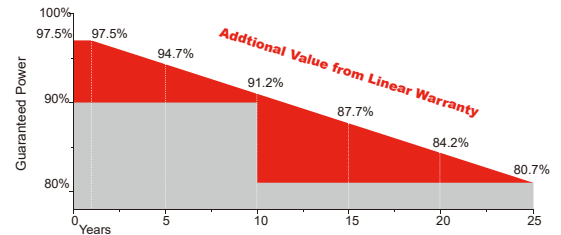
PRODUCT CERTIFICATES



INSURANCE



WARRANTY



10 YEARS Guarantee on product material and workmanship

25 YEARS linear power output warranty

Safety



Safety for salt mist corrosion (IEC61701, tested in TÜV SÜD)



Safety for ammonia corrosion (IEC62716, tested in TÜV SÜD)



Safety for fire risk (Class C, tested in TÜV SÜD and Rheinland)

Reliability



PID free products, passing TÜV SÜD system voltage durability test



World 1st company to pass "Thresher Test" and "On-site Power Measurement Validation" certificate



Bankable products

Performance



Outstanding power output capability at low irradiance



Triple 100% Electroluminescence (EL) tests minimize breakage rate



Top rank in Photon yield measurement

SRP-6PA SERIES 6 INCH 72 CELLS



*BLACK FRAME / BLACK BACK-SHEET PRODUCTS ARE AVAILABLE UPON REQUEST.

Electrical Characteristics(STC)

Module Type	SRP-315-6PA	SRP-320-6PA	SRP-325-6PA	SRP-330-6PA
Maximum Power at STC - P_{mp} (W)	315	320	325	330
Open Circuit Voltage - V_{oc} (V)	45.3	45.5	45.7	45.9
Short Circuit Current - I_{sc} (A)	8.87	8.96	9.03	9.12
Maximum Power Voltage - V_{mp} (V)	36.8	37	37.3	37.5
Maximum Power Current - I_{mp} (A)	8.56	8.65	8.72	8.80
Module Efficiency STC- η_m (%)	16.23	16.49	16.75	17.01

STC: Irradiance 1000 W/m² module temperature 25°C AM=1.5

Power measurement tolerance: +/-3%

Electrical Characteristics(NOCT)

Module Type	SRP-315-6PA	SRP-320-6PA	SRP-325-6PA	SRP-330-6PA
Maximum Power at NOCT - P_{mp} (W)	233	236	240	244
Open Circuit Voltage - V_{oc} (V)	41.9	42	42.2	42.4
Short Circuit Current - I_{sc} (A)	7.17	7.24	7.30	7.37
Maximum Power Voltage - V_{mp} (V)	34.4	34.6	34.8	35.0
Maximum Power Current - I_{mp} (A)	6.77	6.83	6.89	6.98

NOCT: Irradiance 800 W/m² ambient temperature 20°C wind speed :1m/s

Power measurement tolerance: +/-3%

Power Tolerance (W)	(0,+4.99)
Maximum System Voltage (V)	1000 (TÜV), 1000 (UL)
Maximum Series Fuse Rating (A)	15

Temperature Characteristics

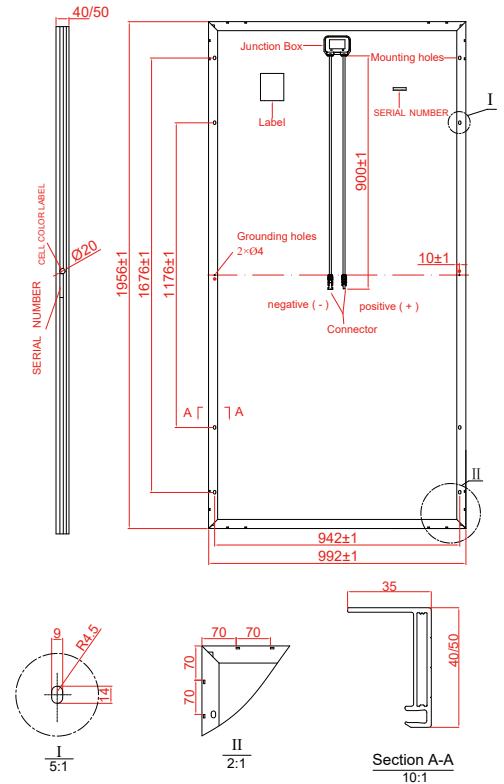
Pmax Temperature Coefficient	-0.41 %/°C
Voc Temperature Coefficient	-0.32 %/°C
Isc Temperature Coefficient	+0.05 %/°C
Operating Temperature	-40~+85 °C
Nominal Operating Cell Temperature (NOCT)	45±2 °C

Packing Configuration

	1956 x 992 x 50mm		1956 x 992 x 40mm	
Container	20'GP	40'GP	20'GP	40'GP
Pieces per Pallet	21	21	26	26
Pallets per Container	10	22	10	22
Pieces per Container	210	462	260	572

Mechanical Specifications

External Dimensions	1956 x 992 x 50 mm	1956 x 992 x 40 mm
Weight	24 kg	23 kg
Solar Cells	Poly crystalline 156.75x156.75 mm (72pcs)	Poly crystalline 156.75x156.75 mm (72pcs)
Front Glass	3.2 mm tempered glass, low iron	3.2 mm tempered glass, low iron
Frame	Anodized aluminium alloy	Anodized aluminium alloy
Junction Box	IP67	IP67
Output Cables	4.0 mm ² ,cable length:900 mm	4.0 mm ² ,cable length:900 mm
Connector	MC4 Compatible	MC4 Compatible
Mechanical Load	5400 Pa	5400 Pa



* All Dimensions in mm

* The above drawing is a graphical representation of the product. For engineering quality drawings please contact SERAPHIM.

I-V Curve (SRP-315-6PA)

